

Rolling Prairie Elementary School
August 2023



BULLDOG NEWS

WOOF-WOOF

Principal:
Pamela S. Moore, Ph.D.

P: 219-778-2018
E: pamelamoore@npusc.k12.in.us

Bulldog Families,

We are excited to kick-off another school year! A big WELCOME to our new families! As a school community, we will work together to ensure ALL of our students are successful. Thank you for your support, trust, and belief in us. It is of utmost importance to us for all students to feel they belong as a member of our Bulldog family. Please do not hesitate to reach out to me or any Rolling Prairie staff member with questions/concerns. We keep going and keep growing! Woof-woof!

Dr. Moore, Principal

CHECK IT OUT!

- ☒ [Click here](#) to view our district's website
- ☒ Come work with us! [Click here](#) to view employment opportunities at NPUSC.

IMPORTANT DATES TO KNOW

- 8/7-NPUSC School Board Meeting**
- 8/9 - Open House 5:00-6:00 p.m.**
- 8/10 - First Day of School**
- 8/11 - Late Start Friday**
- 8/15 - PTO meeting @3:30**
- 8/21 - BMX anti-bullying program**
- 9/4 - Labor Day No School**



Motto

Practice Makes Progress



Mission

Our purpose is to ensure high levels of learning
for all students

Vision

Rolling Prairie Elementary School will empower
students through diverse opportunities to have
the academic and social-emotional skills to be
responsible citizens of a global society

Beliefs

At Rolling Prairie Elementary School we...

- treat everyone with respect
- provide a safe and welcoming environment
- foster positive learning experiences
- partner with home, school, and community
- collaborate with colleagues to cultivate student success



Daily Schedule

Breakfast – 8:20

Start Time – 8:40

End Time – 3:10

Late Start Fridays

(School Starts 45 minutes later)
Students may still arrive at 8:20.
However, bus pick up times will
will be delayed by 45 minutes.

Breakfast–8:20

Start Time – 9:25

End Time–3:10

**To View the NPUSC
Elementary Handbook
[Click Here](#)**



Supply Lists [Click Here](#)

***All students need a
backpack, gym shoes, and
earbuds**

Nutritional Services

Elementary Students:

Breakfast: \$1.70

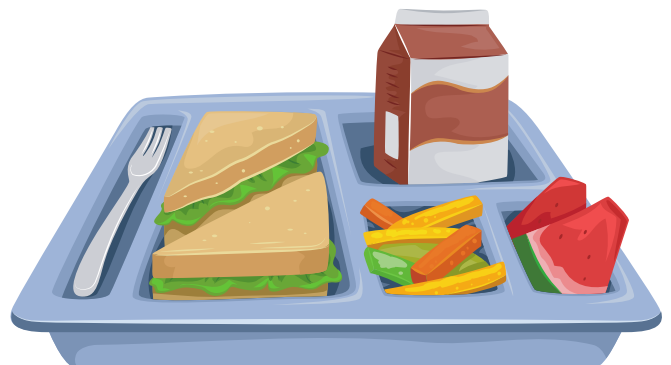
Lunch: \$2.50

Snack: \$1.00

Extra Milk: \$0.45

To visit NPUSC Nutritional
Services Website
[Click Here](#)

You can access menus and
add money to your child's
lunch account



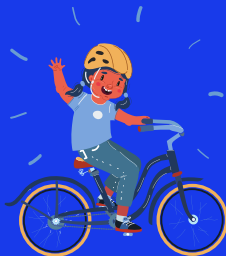
ARRIVAL & DISSMISSAL

Walkers, Bikers, & Car Riders

Park and Walk – No cars will be allowed to park in front of the school building. Please park in our parking lot and walk your child to/from the front doors. *important* dogs are not allowed on school grounds.

Carline drop-off will begin at 8:20. Carline pick-up will begin at 3:10. A student name card needs to be displayed in your windshield. (These will be given out at Open House)

**Carline Expectations
Students need to independently enter/exit their vehicle on the passenger side. Adults should not exit their vehicles. Cars should not pass one other.**



Bus Riders

If you live in the district and do not plan to utilize busing, please contact the transportation department as soon as possible.

NPUSC Busing/Transportation information has been sent via email from transpo@npusc.k12.in.us. If there are errors in the information received please email Isamford@npusc.k12.in.us, and we will work on getting those errors corrected. If you do not receive an email and believe you should have please call the transportation office at 574-654-7373 or 219-778-9585.

Pick-up Plan and Changes

Please make sure our office knows the plan for pick-up every day. Please send a note on the first day of school or an email to the RP secretaries:

Skye Payne

skypepayne@npusc.k12.in.us

or Heather Hale

heatherhale@npusc.k12.in.us

***If there are any pick-up changes, please let the office know. You can send a note, call the office, or email the RP secretaries. No changes to pick-ups will be made after 1:00 p.m..**

WE ARE A FAMILY FRIENDLY SCHOOL WE WELCOME VOLUNTEERS

Interested in Volunteering?

Please [click here](#) to fill out a volunteer background check form. This form needs to be submitted every school year. If you have any questions, please reach out to Richelle Kmak at 574-654-0266

Important Background checks need to be submitted and approved at least seven school days before volunteering at our school.





We are a Professional Learning Community [PLC]

What does this mean?

We work collaboratively to improve teaching and learning. Four critical questions drive our work.

Four Critical Questions:

- 1. What do we want all students to know and be able to do?**
- 2. How will we know if they learn it?**
- 3. How will we respond when some students do not learn?**
- 4. How will we extend the learning for students who are already proficient?**

PARENT TEACHER ORGANIZATION [PTO] NEWS

If you would like to contact our PTO, please email them at rollingprairiepto@gmail.com

[Click Here](#) to like our Facebook page

Rolling Prairie PTO-Home Of The Bulldogs