

NPUSC Health Protocols

Dear Parent/Guardian:

New Prairie United School Corporation wants all of our school families to know that your child's health, safety, and academic progress have been at the forefront of our minds in light of the global COVID-19 pandemic. Please know our staff and faculty are focusing their time, effort, and resources on keeping your student(s) healthy.

New Prairie United School Corporation will:

- continue to create the safest, academic experience given the realities of COVID-19
- listen and evolve our planning as necessary with local Health Department guidance and CDC recommendations
- keep the community and families informed along the way

Common questions

Will student temperatures be taken daily upon entry to the school or a bus?

What types of screening will NPUSC conduct?

The district may take the temperature of students, employees and visitors on school property on a random basis or in situations where there is reason to believe that the person may be ill. However, NPUSC will not be taking the temperature of every student upon arrival at school or on a NPUSC School Bus

Our district will ask guardians/staff members to self-screen before coming to school or work per CDC guidelines, NPUSC will not be taking temperatures of all students upon entry as this could minimize social distancing and some portable temperature taking methods are not always accurate. Staff will be trained to identify or ask about a variety of symptoms, which may then prompt a temperature check

How is NPUSC taking preventative measures?

Students and employees that exhibit symptoms of COVID-19 should stay home. Also, students and employees should remain home if someone in the household has COVID-19 symptoms or is being tested for COVID-19. We plan to follow CDC recommendations related to these situations, which are included. Each school will have a room or space separate from the nurse's clinic where students or employees who are feeling ill are evaluated or wait for pick up. Our priority of preventing the spread of the disease in the school setting is to insist that sick waiting staff and students should wear a face covering. Only essential staff may enter and a record will be kept of all persons who entered the room, plus the room will be disinfected. Strict social distancing will be required and health staff must wear appropriate PPE.

Will NPUSC be providing sanitizing supplies? What about Water for Students?

Handwashing and avoiding touching your face, eyes, nose, or mouth will be reinforced at school. Hand Sanitizer will be provided in all classrooms and common areas throughout the school buildings. Everyone will be encouraged to wash hands for 20 seconds or use a hand

sanitizer with at least 60% alcohol frequently during the day. Water fountains will not be utilized to prevent germ spreading. NPUSC will be supplying water to students including water stations throughout all buildings. Students are encouraged to bring their own water as well.

What happens if my student or staff member tests positive for Covid-19?

According to CDC, persons who experience symptoms and have been tested for COVID-19 may return to school if the following conditions are met:

- The individual no longer has a fever (without medication that reduces fevers); and other symptoms have improved (for example, when your cough or shortness of breath have improved); and
- At least 10 calendar days have passed since symptoms first appeared; or
- If they are approved to do so in writing by the student's health care provider

What factors will prompt possible school exclusion for a student or staff member?

- Persons testing positive for COVID-19 may return when they have completed ten calendar days (or 14 days in some cases) without symptoms and have been released by a healthcare provider
- Students or staff members should be excluded from school if they exhibit a combination of the following symptoms of COVID-19 based on CDC guidance that is not otherwise explained
 - A fever of 100.4 or greater
 - Cough
 - Shortness of breath or difficulty breathing
 - Chills
 - Repeated shaking with chills
 - Muscle pain
 - Headache
 - Sore throat
 - New loss of taste or smell

What if a school nurse/employee sends a student or staff member home due to showing various COVID-19 related signs? What are the next steps?

Once a student or employee has been sent home from the school environment due to showing COVID-19 related symptoms, they may return if they satisfy the recommendations of the CDC.

Students and employees exhibiting symptoms of COVID-19 without being otherwise explained, are prohibited from coming to school, and if they do come to school, they will be sent home immediately. Students or staff members not tested for COVID-19 but are experiencing various symptoms may return if the following bulleted conditions are met:

- They have not had a fever for 72 hours (without the use of medication to reduce fever)
- Other symptoms have improved (for example cough or shortness of breath)
- At least 10 calendar days have passed since the symptoms first appeared

What if a student or staff has been exposed to someone confirmed to have COVID-19 outside of school, such as another family member-What steps should be taken?

The individual must quarantine for 14 days after contact with the COVID-19 Positive person even if the student has an alternate diagnosis for symptoms. Refer to the Indiana State Dept of Health Return to School Chart for more information

Will students or staff members be required to wear masks and other PPE Equipment?

- NPUSC is still evaluating this situation and will make final decisions in late July with a final Return to School format decision. It is possible staff and students may be required to wear face masks during hallway passing periods, large gatherings, or any situation in which social distancing can't reasonably be enforced
- The current CDC guideline recommends that all students and employees wear cloth face coverings. It is advisable to prepare to have a mask available when needed. NPUSC will have a limited supply of masks for students to use
- Some students may be required to wear additional PPE (i.e. health-related, special conditions, etc.) when directed to do so by their individual health provider
- Some non-students may be required to wear additional PPE (i.e. health-related, cafeteria staff, specialized positions, etc.) when directed to do so by district protocol or the employee's supervisor
- Additional accommodations may need to be made for students and staff based on their individual health plan

What questions would a guardian or staff receive if they are not at school due to illness?

Federal law typically limits the type of medical inquiries that can be made, but given the nature of the pandemic, districts/schools can ask additional medical questions of students/staff than would otherwise be allowed.

- If a parent tells the school that a student is ill, the school may ask the parent if the student is exhibiting any symptoms of COVID-19
- If an employee calls in sick or appears ill, the district/school can inquire as to whether the employee is experiencing any COVID-19 symptoms
- If a person is obviously ill, the district/school may make additional inquiries and may exclude the person from school

Our goal at New Prairie United School Corporation is to keep our student(s) and staff safe during these unprecedented times. We will continually evaluate and monitor our health protocols for the safety of our students and staff

What if the individual school has a confirmed case of COVID-19 on school property?

If an individual school receives valid information that there is a confirmed person infected with COVID-19, the district/school will contact the local health department immediately. The district/school will work with the local health department to assess factors to determine the likelihood of exposure to employees and students in the building to determine further

interventions. A contact tracing process will occur at this point. In partnership with the local health department, it will be determined if it is necessary to transition part of a classroom, a classroom, school, or the school system to e-learning. A intensive cleaning will occur to any school in which a positive case is found.

COVID-19: When a student, faculty or staff member can return to school



Individual	Symptomatic	No Symptoms
Not Tested with Alternate Explanation (strep, influenza, etc. as determined by a provider)	May return to school after 24 hours resolution of fever AND note (including email and fax) from provider stating the individual has an alternate diagnosis and the provider believes it's appropriate for the patient to return to school.	N/A
Not Tested Without Alternate Explanation	Must remain home for at least 10 days from the first day symptoms appeared AND 72 hours fever-free without fever-reducing medicine and with improvement of respiratory symptoms.	N/A
Tested and Negative	If no alternative explanation, <i>isolate</i> for at least 10 days from the first day symptoms appeared AND 72 hours fever-free without fever-reducing medications and with improvement of respiratory symptoms. The test may have been a false negative. The individual can return to school if tested negative AND with a note from the provider stating they believe the patient to have an alternate diagnosis and it's appropriate for the patient to return to school. <i>(ISDH strongly recommends the time-based strategy versus the two-test strategy, which is under review by the CDC.)</i>	May proceed with attending school. EXCEPTION: A known close contact (within 6 feet of a confirmed case for more than 15 minutes) must complete a 14-day <i>quarantine</i> , even if test results are negative for COVID-19.
Tested and Positive	Must remain home in <i>isolation</i> for at least 10 days from the date symptoms began AND 72 hours fever-free without fever-reducing medications and improvement of respiratory symptoms.	<i>Isolate</i> at home for 10 days from the day the test was taken. <i>*If the individual develops symptoms, then isolation time starts on day 1 of symptoms (see symptomatic tests positive.)</i>
Close Contact (within 6 feet for more than 15 minutes of someone with confirmed COVID-19)	N/A If an individual becomes symptomatic, refer to the symptomatic scenarios. The individual must <i>quarantine</i> for 14 days after contact with the COVID-19 Positive person even if the student has an alternate diagnosis for symptoms.	<i>Quarantine</i> for 14 days before returning to school. Must remain symptom-free. If individual develops symptoms, then refer to the symptomatic scenarios.

Note: QUARANTINE keeps someone who was in close contact with someone who has COVID-19 away from others.
ISOLATION keeps someone who is sick or tested positive for COVID-19 without symptoms away from others, even in their own home.



• Student gets tested for COVID-19 at a testing event put on by a community organization. The student was symptom-free when he got the test. The test comes back positive. The student must *isolate* and stay symptom-free for 10 days after the date he took the test.



• Student gets tested for COVID-19 at a testing event put on by a community organization. The student was symptom-free when she got the test. The test comes back positive. The student starts *isolating* for 10 days after the date she took the test. Four days into her *isolation*, she develops a fever and cough. She must now *isolate* at home for at least 10 days and 72 hours fever-free without fever-reducing medicine and with improvement in respiratory symptoms. The student ends up *isolating* at home for 14 days.



• Student tests positive and has three siblings in the home or as close contacts who attend other schools. If the siblings have symptoms, they should be tested and report to that school if results are positive. Otherwise, siblings should *quarantine* for 14 days before returning to school. Contacts of the siblings are not considered a close contact unless the siblings test positive themselves.



• Student has a fever, cough, headache and loss of taste and smell. The student goes to get tested and the test is negative. There is at least a 30% chance of having a false negative test. Therefore, it would still be required that this student *isolate* at home for at least 10 days and 72 hours fever-free without medication and with reduction in respiratory symptoms.



• Student has a fever and sore throat and history of getting strep throat. Student sees her provider, who does a strep test and exam and believes the patient has strep throat and does not have COVID-19. The student may return to school after 24 hours fever-free with a note from her provider stating she may return to school.



• Student has fever, cough, shortness or breath, and loss of taste and smell. His parents do not want to get him tested for COVID-19. Highly recommend that the student get tested so that the proper contact tracing can be done. The student will need to *isolate* at home for at least 10 days and go 72 hours fever-free without use of medication and have a reduction in respiratory symptoms. Additionally, if the school is suspicious that the student has COVID-19, the school could do contact tracing and monitoring for others with symptoms..

COVID-19 Screening Decision Tree

Student or staff member complains of COVID-19 or MIS-C symptoms.

Call 9-1-1 (EMS) if any the following symptoms are exhibited

- +Difficulty or Rapid Breathing
- +Chest Pain
- +Pulse O₂ <92%
- +New Confusion
- +Bluish Lips/Face
- +Unable to wake or stay awake

NO



Mask student or staff member

Place student in isolation area away from others



Staff should go home immediately and consult a healthcare provider.

Questions to ask:

1. When did symptoms appear?
2. Recent COVID-19 exposure?
3. Signs and Symptoms (*see list on back*)
4. Temp > 100.4 or school board policy if lower
5. +Pulse O₂ <92%

Verbal, Visual, & Physical concerns out of range?

NO

Allow to rest for 10 minutes

Improving? NO

YES

Back to Class

YES

- +Isolate
- +Send home ASAP
- +Contact Medical Provider
- +Contact Public Health

FOLLOW-UP WITH

- +Student/family
- +Health Services
- +Administrator

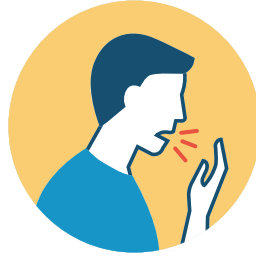
Symptoms of COVID-19



CONGESTION
OR RUNNY NOSE



FEVER 100.4*
*or school board policy
if threshold is lower



COUGH



SHORTNESS OF BREATH OR
DIFFICULTY BREATHING



DIARRHEA



NAUSEA



SORE THROAT



MUSCLE PAIN



CHILLS



NEW LOSS OF TASTE
OR SMELL

**Usually presents with more than one symptom.*

Look for emergency warning signs* for COVID-19. If someone is showing any of these signs, seek emergency medical care immediately

*Difficulty or rapid breathing

*Persistent pain or pressure in the chest

*New confusion

*Inability to wake or stay awake

*Bluish lips or fact

*Stomach Pain

**This list is not all possible symptoms. Please call your medical provider for any other symptoms that are severe or concerning to you.*

**Call 911 or call ahead to your local emergency facility:
Notify the operator that you are seeking care for someone who has
or may have COVID-19.**

Symptoms of MIS-C

*Rash

*Red Eyes

*Cracked/Swollen Lips

*Red/Swollen Tongue

*Swelling Hands/Feet

*Stomach Pain